

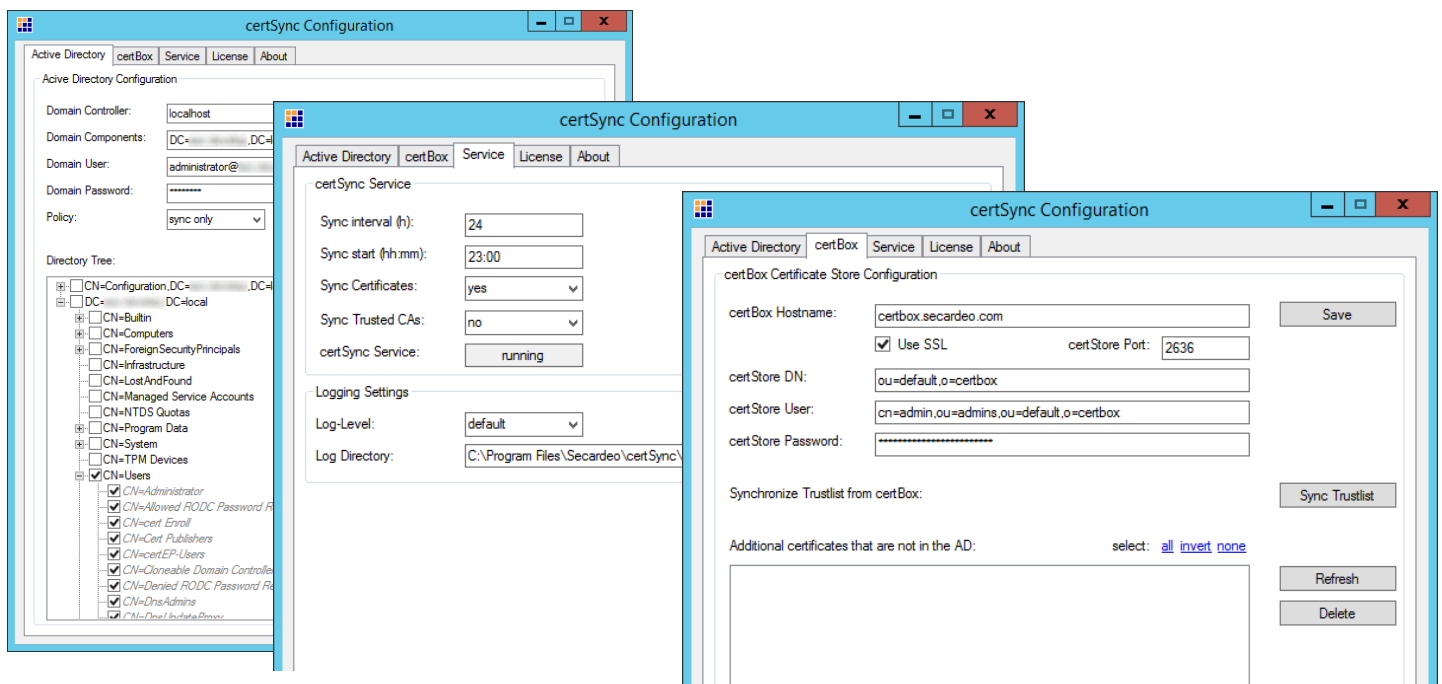


certSync

Secardeo certSync v3 is a synchronization service for digital certificates, certificate revocation lists (CRL) and certificate trust lists (CTL). It supports manual or automatic synchronization of these data between Windows Active Directory (AD) and a Secardeo certBox v3 certificate server. Synchronized CTLs can automatically be distributed to all computer members in AD by Group Policy. certSync also supports synchronization of certificates and CRLs between LDAP servers.

The following features are supported:

- Synchronization of user certificates from Active Directory to a certBox certificate store
- Automatic validation of certificates to be synchronized
- Synchronization of CA certificates and revocation lists (CRL) from Active Directory to a certBox certificate store
- Synchronization of certificate trust lists (CTL) from a certBox into Active Directory
- Cleanup feature for certBox certificate stores (automatic removal of invalid or deleted user certificates)
- Periodic background synchronization (certSync service)



Supported Systems:

- Microsoft® Windows® Server 2008 R2
- Microsoft® Windows® Server 2012
- Microsoft® Windows® Server 2012 R2
- Microsoft® Windows® Server 2016

Further platforms on request.

Software Requirements:

- Microsoft® .NET Framework

Supported Certificate Servers:

- Secardeo certBox v3
- Further LDAP servers on request.

Supported AD Versions:

- Microsoft® Active Directory 2008 R2, 2012, 2012 R2, 2016

Further AD versions and LDAP servers on request.

Standards:

- LDAP v3 RFCs 4510 - 4512
- LDAP via TLS RFC 4513
- X.509-Certificates and CRLs RFC 5280
- Certificate Trust Lists (.p7b PKCS#7 Container)

Further information on request.